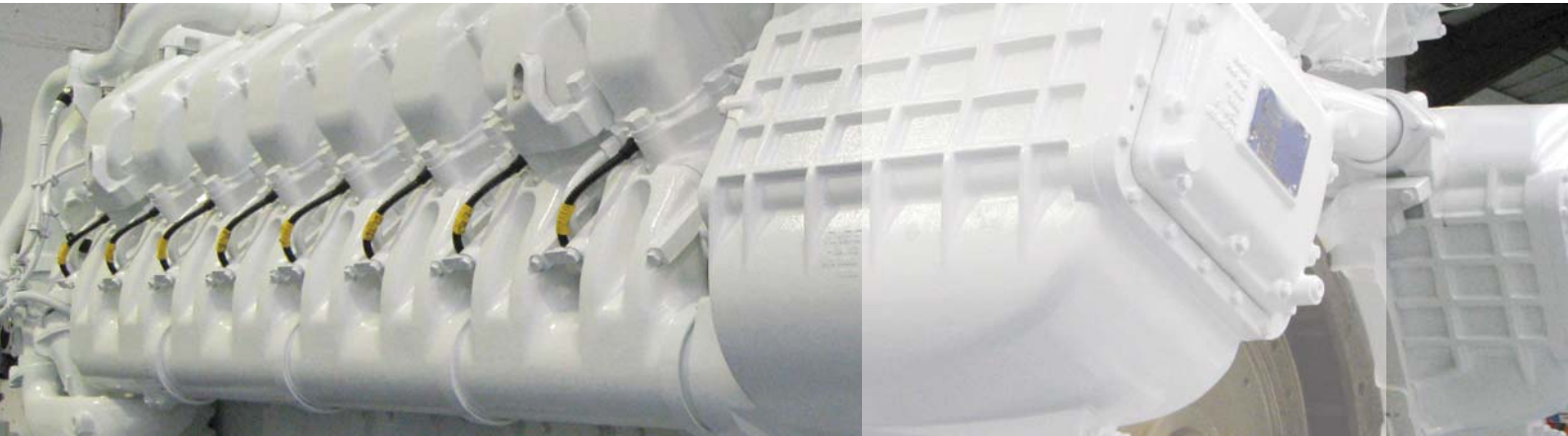


With portable pumps providing 3,000 horsepower AGR can deliver under pressure.



AGR has a fleet of three high pressure, high volume diesel-driven pumps that can be rented individually or as a set. The 3,000 hp marine diesel engines, coupled with multi-stage centrifugal fluid ends, offer up to 200 bar outlet pressure (2,900 psi) and up to 500 m³/hr flow (8,333 lpm/2,200 US gpm). The multi-stage centrifugal pumps are a well-proven design that give years of trouble-free service in a variety of demanding applications, including platform water injection and power station cooling. The three pumps have been designed to work together when required, with computer control to manage power and pressure while optimising economy.



AGR's high pressure pumps each pack 3,000 hp into a thirty foot container, making them the most powerful transportable pumps in the world. Despite all that power the pumps meet stringent emissions requirements and have acoustic enclosures to keep noise down to less than 88 dBA at 1 metre even when working flat out.



Delivering up to 9,000 hp,
25,000 lpm and 200 bar.



AGR's pumps were designed to power the ClayCutter X route preparation system and they have proven themselves to be superb workhorses in this application. However, the pumps can also be utilised individually or together on a number of other applications, where the combination of high power and compact design offers previously unattainable flexibility.

- Temporary water injection – during maintenance of existing equipment or prior to installation of new capacity
- Flushing/cleaning pipelines prior to decommissioning
- Pipeline flooding during commissioning
- Delivering power to subsea equipment such as trenchers

AGR Subsea Limited
Union Plaza
1 Union Wynd
Aberdeen
AB10 1SL
United Kingdom

Tel: +44 (0) 1224 629280
Fax: +44 (0) 1224 629281
E. Excavation.trenching@agr.com

www.agr.com

