

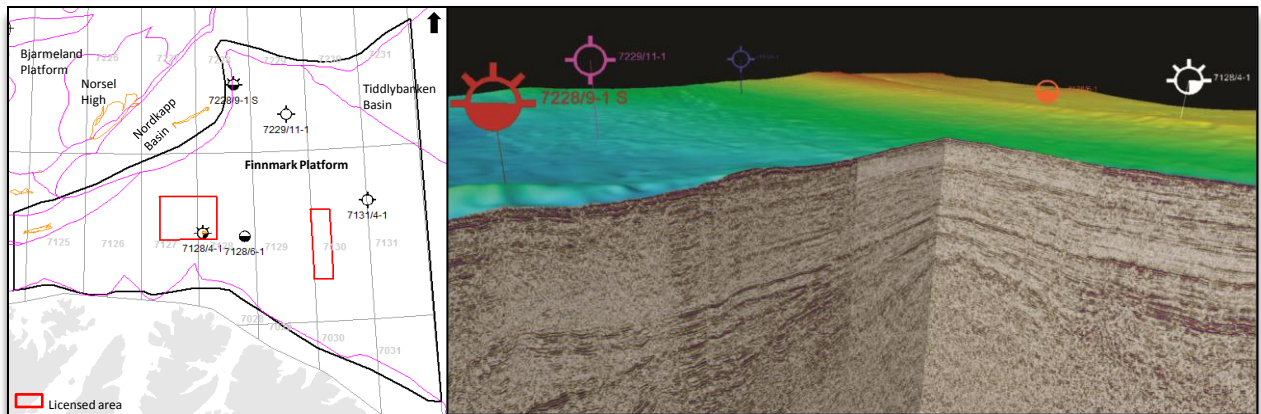


## New Multi-Client Offer

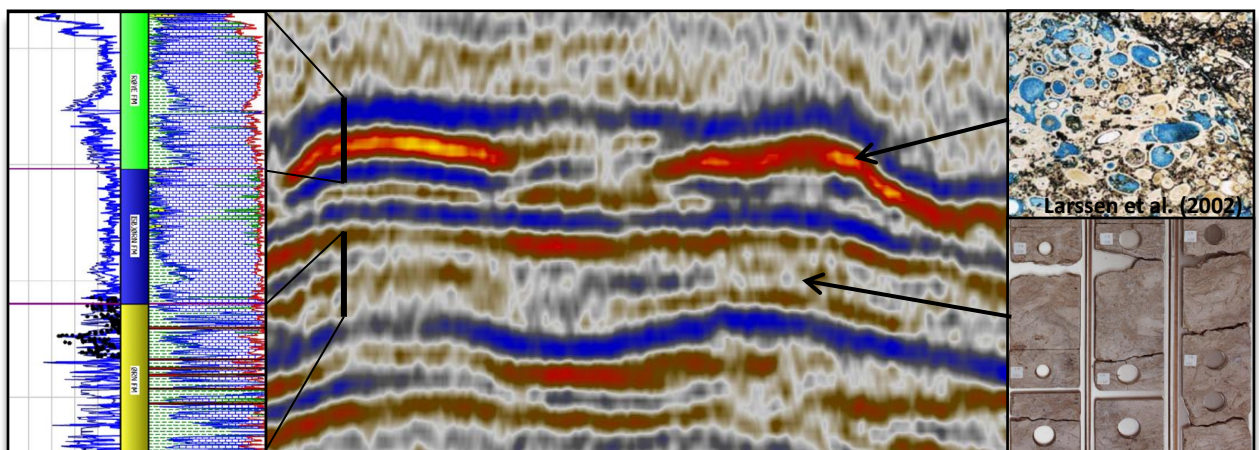
### Finnmark Platform MC Study

Recent hydrocarbon findings highlight the importance of Triassic sandstones and Carboniferous-Permian carbonates plays in the Barents Sea.

AGR Petroleum Services just conducted a study that enhances the understanding of a proven, but under-explored Triassic, Permian and Carboniferous play model with great potential, located on the near-shore Finnmark Platform. The study provides a basis for screening, and an ideal toolbox for further prospect evaluation in the area.

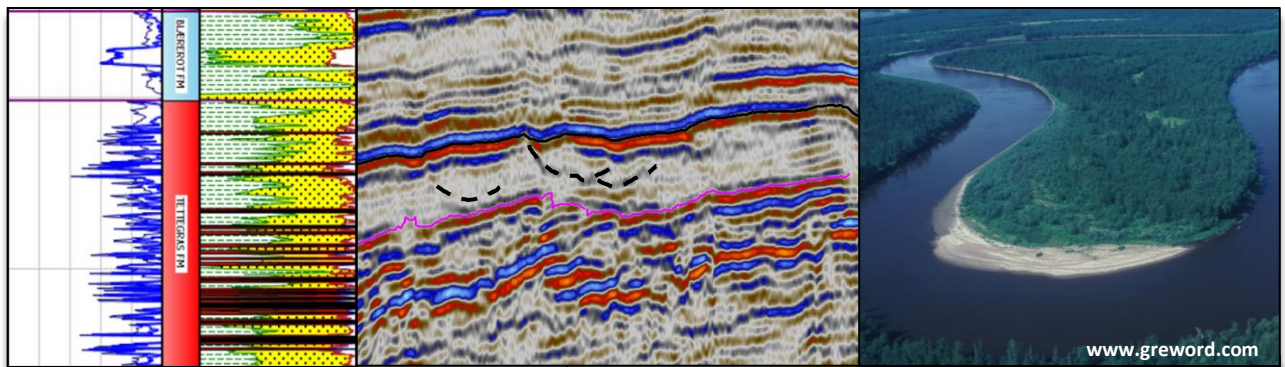


Play models are reviewed with newly released seismic surveys and updated in a geological model. Seismic and well facies integration together with a detailed review of geochemical data and petroleum systems modelling are integrated to evaluate new leads for hydrocarbon prospectivity in the Finnmark Platform.



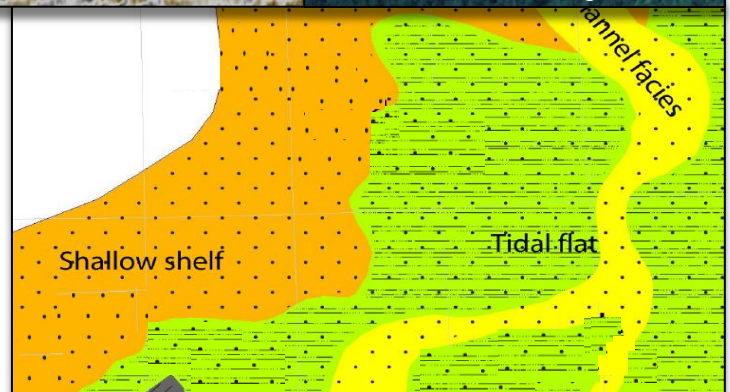


## New Multi-Client Offer



### Deliverables:

- **Well analysis:**
  - ✓ Biostratigraphy
  - ✓ Petrophysics / CPI
  - ✓ Core and facies
- **Interpretation of 9 horizons**
  - ✓ Includes time and depth maps
- **Velocity model**
- **Facies maps**
- **Structural analysis**
- **Play and lead guide**
- **Geochemical data integration and petroleum systems modeling from APT**
- **Petrel Project:**
  - ✓ Complete with all released wells and seismic.



### Well database:

7128/4-1, 7128/6-1, 7131/4-1, 7228/9-1 S, 7229/11-1

### Seismic database:

Released 2D (20 000 km) and 3D (2 469 km<sup>2</sup>)

Further information:

Exploration Manager  
**Erik Lorange**  
[erik.lorange@agr.com](mailto:erik.lorange@agr.com)  
Tel: +47 97027962