

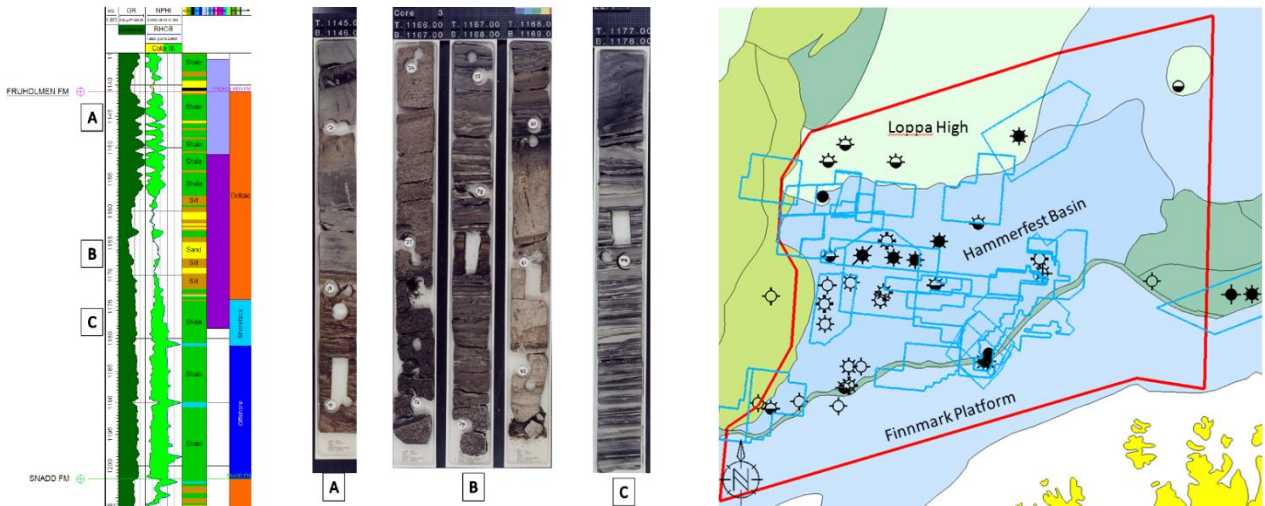


## New Multi Client Offer (April 2015)

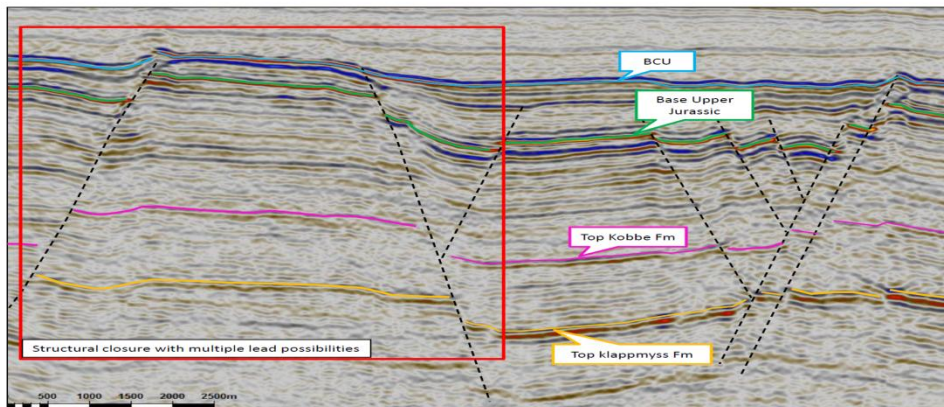
### Hammerfest Basin Triassic MC Study

Recent hydrocarbon findings and studies highlight the importance of Triassic hydrocarbon plays in the Barents Sea and in Hammerfest Basin specifically.

AGR launched a MC study highlighting the Triassic possibilities in the Finnmark Platform in 2013. In April 2015 we are expanding these concepts and ideas across the Hammerfest basin, including the flanks to the north and south.



Play models are reviewed with, updated released seismic and geological models. Seismic and well facies are integrated with a review of the petroleum systems in the area. New leads for hydrocarbon accumulations are presented for the Hammerfest Basin and the platform areas to the north and south.

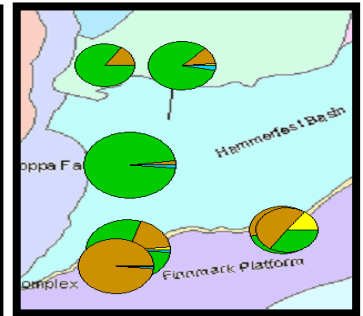
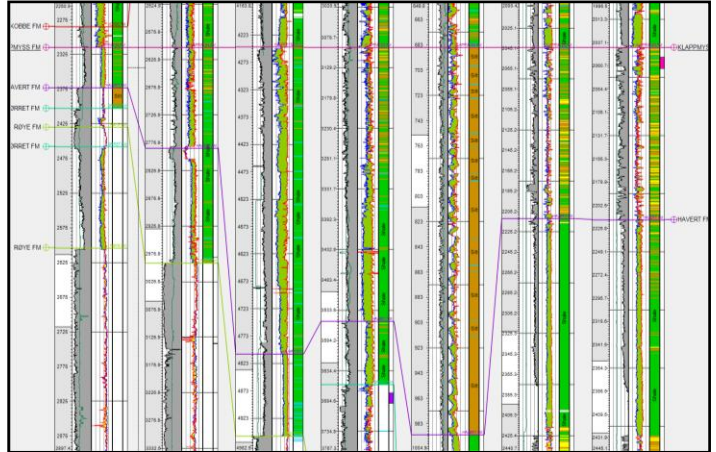




## Hammerfest Basin Triassic MC Study

### Deliverables:

- **Well analysis:**
  - ✓ Petrophysics / CPI
  - ✓ Well facies analysis
  - ✓ 23 key wells, CPI for 30
- **Interpretation 5 Horizons including time and depth maps**
  - ✓ Base Upper Jurassic
  - ✓ Top Kobbe
  - ✓ Top Klappmys
  - ✓ Top Havert
  - ✓ Base Triassic
- **Velocity model**
- **Facies maps**
  - ✓ Fruholmen Fm.
  - ✓ Snadd Fm.
  - ✓ Kobbe Fm.
  - ✓ Klappmys Fm.
  - ✓ Havert Fm.
- **Structural analysis**
- **Play and lead guide**
- **Petroleum systems analyses Based on previous studies and publications**
- **Petrel Project:**
  - ✓ Complete database with wells and seismic.



**Well database:**  
30 released wells

**Seismic database:**  
40 000km of released 2D  
25 3D surveys

**Delivery:** May 2015

Further information:

**Erik Lorange**

Exploration Manager

erik.lorange@agr.com

Tel: +47 97027962