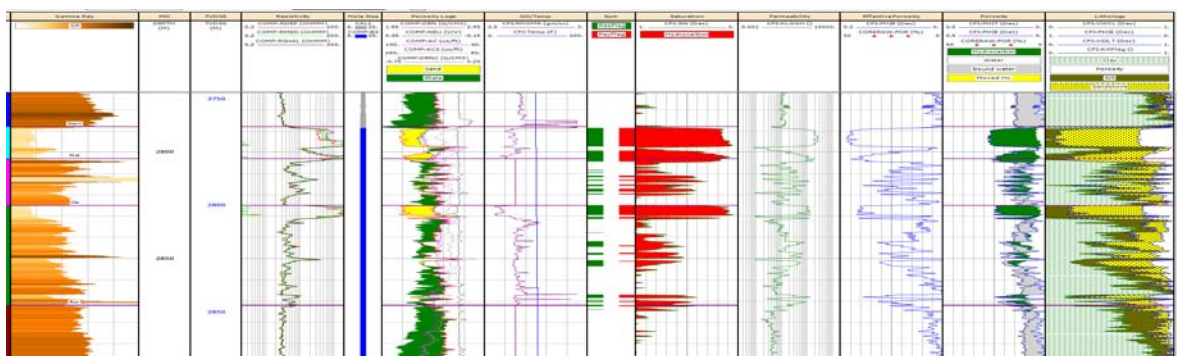


Norwegian Sea Petrophysics Data Base

AGR Reservoir Management has established a petrophysical dataset including 63 interpreted wells in the Norwegian Sea including the Helgeland basin. Using industry standard methods, Volume of shale (GR, density-neutron and/or density-sonic methods), Porosity (density method or sonic method for bad data intervals) and water saturation (Indonesian for shaly intervals) as well as lithology volumes have been interpreted for whole well.

All the available core data and pressure & temperature data loaded and plotted against the log data. Permeability profile has also been generated when enough core data exists to investigate poro-perm relationship and cut-off estimations based on poro-perm data has been performed on reservoir zones.



Content of dataset

- Composite wireline logs
- NPD lithostratigraphy
- Interpreted lithology
- Calculated porosity
- Calculated water saturation
- Cut-off estimation
- Table of averaged reservoir parameters

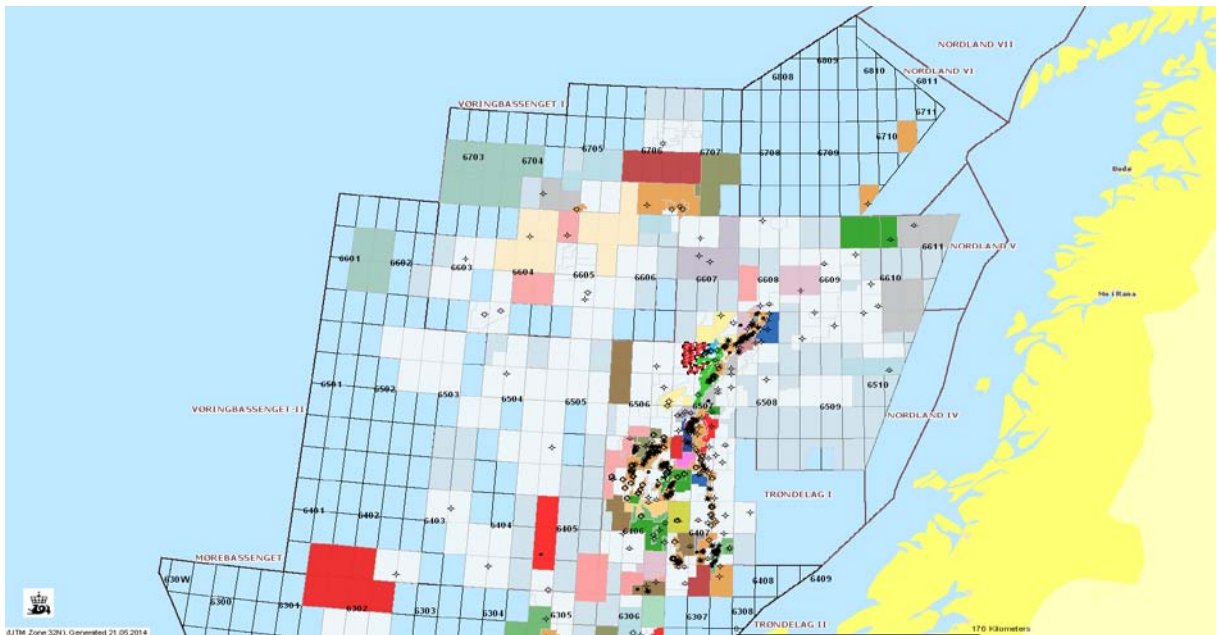
Pricing and deliverables

- Dataset delivered including 63 wells
- Additional wells can be delivered
Deliverables include CPI logs in PDF format, interpreted traces as LAS files and reservoir parameter averages in Excel format



Wells included in dataset

- 6201/11-1
- 6201/11-2
- 6204/10-2R
- 6205/3-1R
- 6302/6-1
- 6305/8-1
- 6305/12-1
- 6305/12-2
- 6306/6-1
- 6403/6-1
- 6403/10-1
- 6404/11-1
- 6405/7-1T2
- 6406/1-2
- 6406/2-1
- 6406/2-1R
- 6406/2-3T3
- 6406/3-1
- 6406/9-1
- 6406/11-1
- 6406/12-1
- 6407/6-3
- 6407/7-1S
- 6407/9-1
- 6505/10-1
- 6506/3-1
- 6506/6-1
- 6506/11-7
- 6506/12-1
- 6506/12-3
- 6507/3-1
- 6507/3-2
- 6507/3-3
- 6507/5-1
- 6507/8-1
- 6507/11-3
- 6507/12-2
- 6508/5-1
- 6510/2-1
- 6605/8-1
- 6607/5-1
- 6607/5-2
- 6507/8-1
- 6507/11-3
- 6507/12-2
- 6605/8-1
- 6607/5-1
- 6607/5-2
- 6608/8-1
- 6608/10-2
- 6609/7-1
- 6609/10-1
- 6609/11-1
- 6610/3-1R
- 6610/7-1
- 6610/7-2
- 6610/10-1
- 6704/12-1
- 6706/6-1
- 6706/11-1
- 6707/10-1
- 6710/10-1



Contact details

Exploration Manager
 Erik Lorange
 erik.lorange@agr.com
 Tel: +47 97027962