



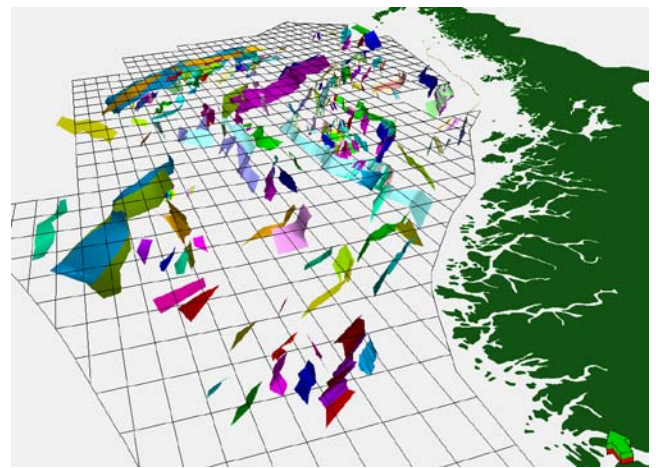
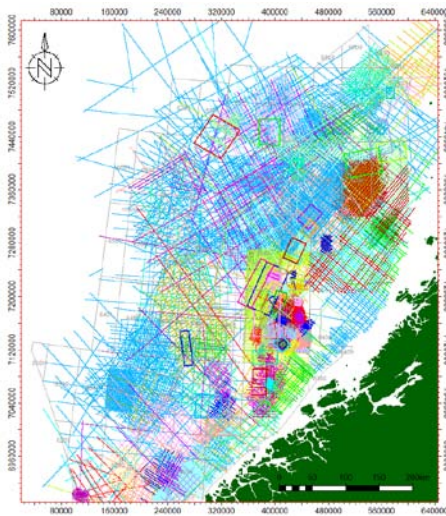
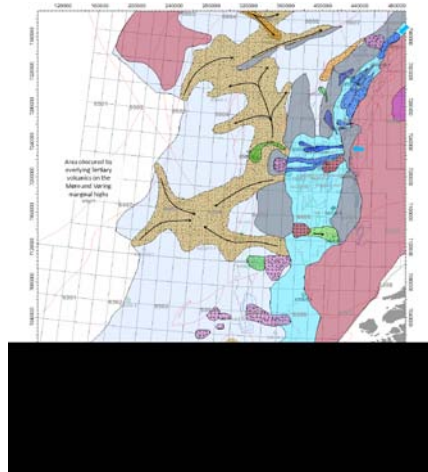
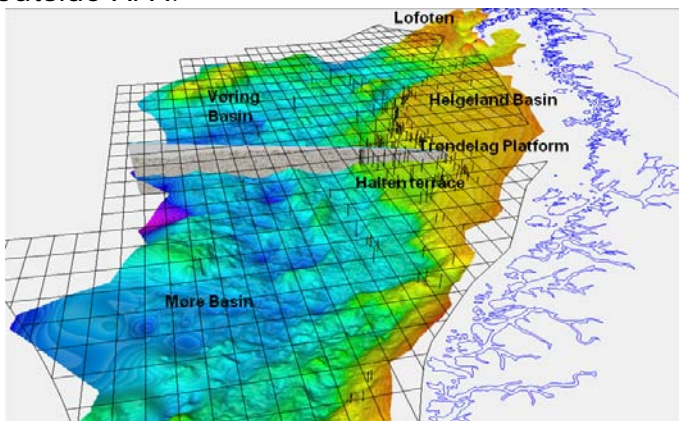
## Norwegian Sea Digital Atlas (2013)

Cooperative effort between; AGR, APT and Sintef. Provides a guide and a comprehensive tool box for companies aiming for a license application in the Norwegian Sea.

The Study consists of a fully integrated Petrel project updated with released seismic, wells and licensing, horizon interpretation on public seismic, calibrated with a biostratigraphic framework (APT) from key wells (50). The project features high quality well-to-seismic ties, and consistent seismic interpretations of key horizons.

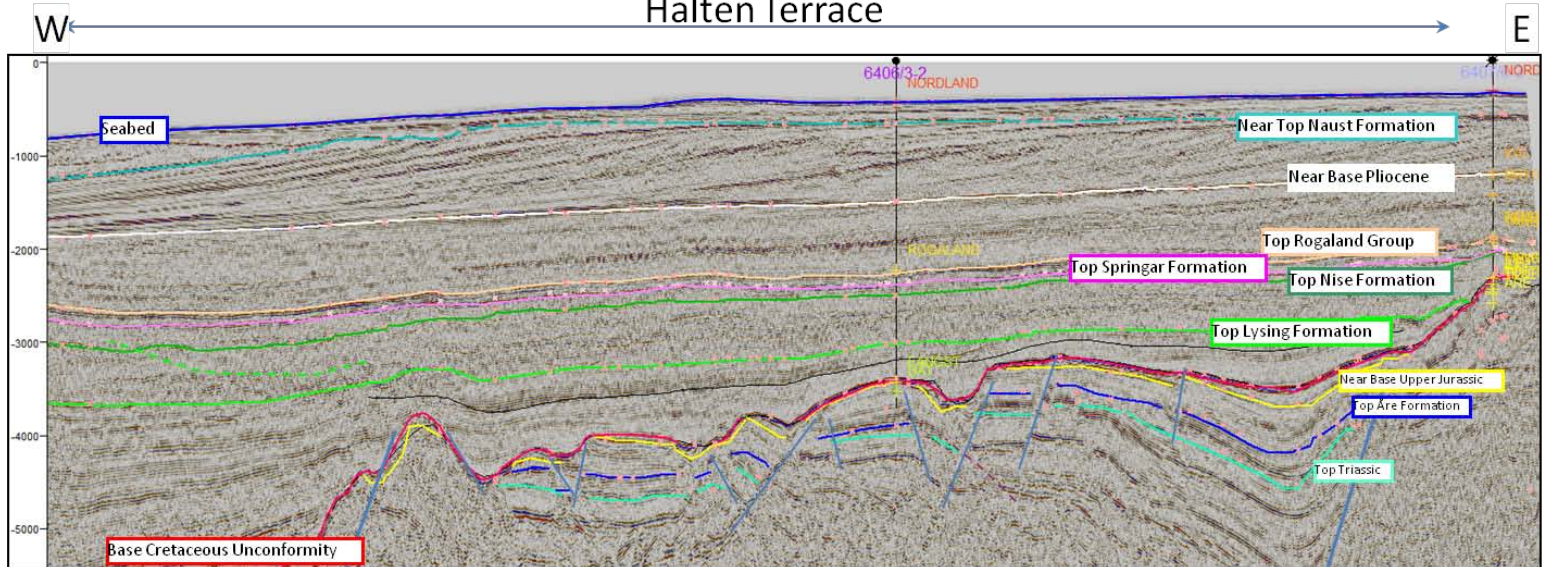
The multi-client project is delivered on a digital format to suit various software platforms. The project is an ideal basis for development of geological concepts, definition of prospective trends and reservoir characteristics.

The project will enable identification of areas to invest and focus, both inside and outside APA.





## Halten Terrace



### Deliverables:

#### ➤ 12 interpreted horizons

- ✓ Seabed
- ✓ Intra Upper Naust Fm.
- ✓ Intra Pliocene Unconformity
- ✓ Top Rogaland Gp.
- ✓ Top Springar Fm.
- ✓ Top Nise Fm.
- ✓ Top Lysing Fm.
- ✓ Base Cretaceous Unconformity
- ✓ Near Base Upper Jurassic
- ✓ Top Åre
- ✓ Top Triassic
- ✓ Top Permian

#### ➤ 15 Regional facies maps

- Time and depth surface grids
- Regional fault interpretation (342 faults)
- Biostratigraphic tops of 50 wells (APT)
- 50 wells with CPIs
- Basin modelling (Sintef)

#### ➤ **Petrel project:**

- ✓ Released seismic surveys (227 000 km of 2D and a total of 42 3D surveys)
- ✓ 200 wells

Further information:

Exploration Manager  
**Erik Lorange**  
[erik.lorange@agr.com](mailto:erik.lorange@agr.com)  
 Tel: +47 97027962